



# Classification & Naming Process

---

California State Park and Recreation Commission

Presented by Alexandra Stehl

Deputy Director Strategic Planning & Recreation Services Division, California State Parks

# State Park System

---



Two types of properties inventoried as part of the State Park System

## Classified

- 265 classified park units

## Unclassified

- 15 unclassified park properties

Total Units and Properties in the State Park System

280

# Classification & Naming



Parks are classified by the Commission in one or more of several classifications defined in the Public Resources Code Sections 5019.50 - 5019.80.

Unit classification determines the primary focus for management of resources and allowable uses, which provides the framework for preparing a general plan.

No new facility may be developed in any unit of the state park system unless it is compatible with the classification of the unit.

# Classifications



State Parks

SP 89

State Recreation Areas

SRA 33

Underwater Recreation Areas

URA 0

State Beaches

SB 62

Wayside Campgrounds

WC 1

State Historic Park

SHP 52

State Historical Monument

SHM 1

State Natural Reserves

SNR 16

State Cultural Reserves

SCR 0

State Seashore

SS 1

State Vehicular Recreation Area

SVRA 9

State Marine Park

SMP 1

\*Classification categories are described in Division 5, Chapter 1, Article 1.7, Sections 5019.50- 5019.80 of the California Public Resources Code.

# Subclassifications



Used for portions of larger units that need special, more protective, management

• Cultural Preserve	CP	22
• Natural Preserve	NP	61
• State Wilderness	SW	12

Total Subclassifications or “Internal” Units 95

\*Classification categories are described in Division 5, Chapter 1, Article 1.7, Sections 5019.50-5019.80 of the California Public Resources Code.

# Subclassifications



## UNDERSTANDING SUB-CLASSIFICATION: ACTIVITIES

The State Parks classification system includes three sub-classifications: Natural Preserve, Cultural Preserve, and Wilderness Area. Sub-classification, if used, applies to a defined area within the larger park unit. As with primary classification, sub-classification contributes to the determination of the type and intensity of activities allowed in the sub-classified area. This graphic illustrates the range of potential activities under the two applicable sub-classification categories at Alameda-Tesla. The Wilderness Area sub-classification is only applicable in areas of 5,000 acres or greater and thus doesn't apply at Alameda-Tesla.

### TYPES AND RANGE OF ACTIVITIES/DEVELOPMENT

**TRAIL SYSTEM**  
Ex: Paved and unpaved trails

*Low-Intensity:* Fewer, narrower, or shorter trails, limited to hiking only. May have time restrictions. Smaller staging or parking areas.

*High-Intensity:* More, wider, and longer trails that allow biking and equestrian usage. Fewer time restrictions. More and larger staging and parking areas.

**INTERPRETIVE ACTIVITIES**  
Ex: Guided tours, programs, exhibits, and visitor centers

*Low-Intensity:* Limited guided tours, fewer exhibits and programs. Smaller visitor center, if any, with limited development footprint.

*High-Intensity:* Multiple and frequent tours, more exhibit and programs. Larger facilities and more extensive development footprint.

**RECREATION**  
Ex: Wildlife viewing, picnicking, swimming, boating, rock climbing, and other recreational activities

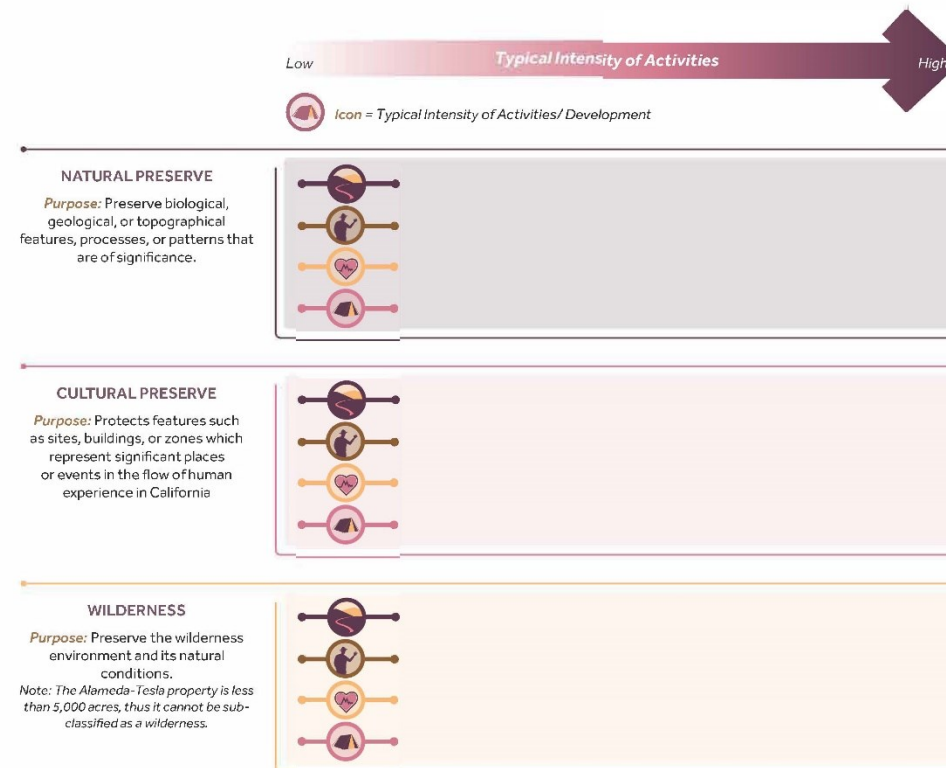
*Low-Intensity:* Fewer and smaller areas for activities and support amenities. May have restrictions on hours, duration, and seasons. Smaller staging and parking areas.

*High-Intensity:* More and larger areas for activities and support amenities. Fewer restrictions on hours, duration and seasons. More and larger staging and parking areas.

**OVERNIGHT LODGING**  
Ex: Camping, RVs, trailers, and hotels

*Low-Intensity:* Fewer and smaller overnight options with minimal facilities. May have restrictions on hours, duration, and seasons.

*High-Intensity:* More and larger overnight options, with more facilities and amenities. Fewer restrictions on hours, duration and seasons.



# Marine Classifications



01

State Marine  
Conservation Area

SMCA

02

State Marine Cultural  
Preservation Area

SMCPA

03

State Marine Park

SMP

04

State Marine Recreational  
Management Area

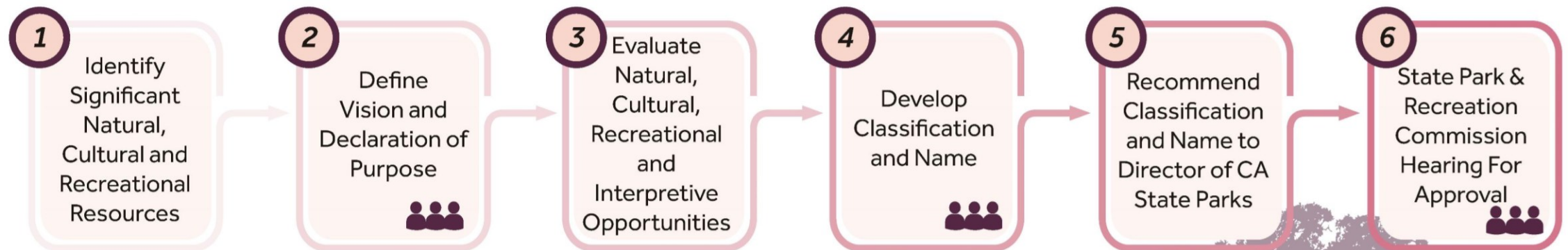
SMRMA

05

State Marine Reserve

SMR

# Classification & Naming

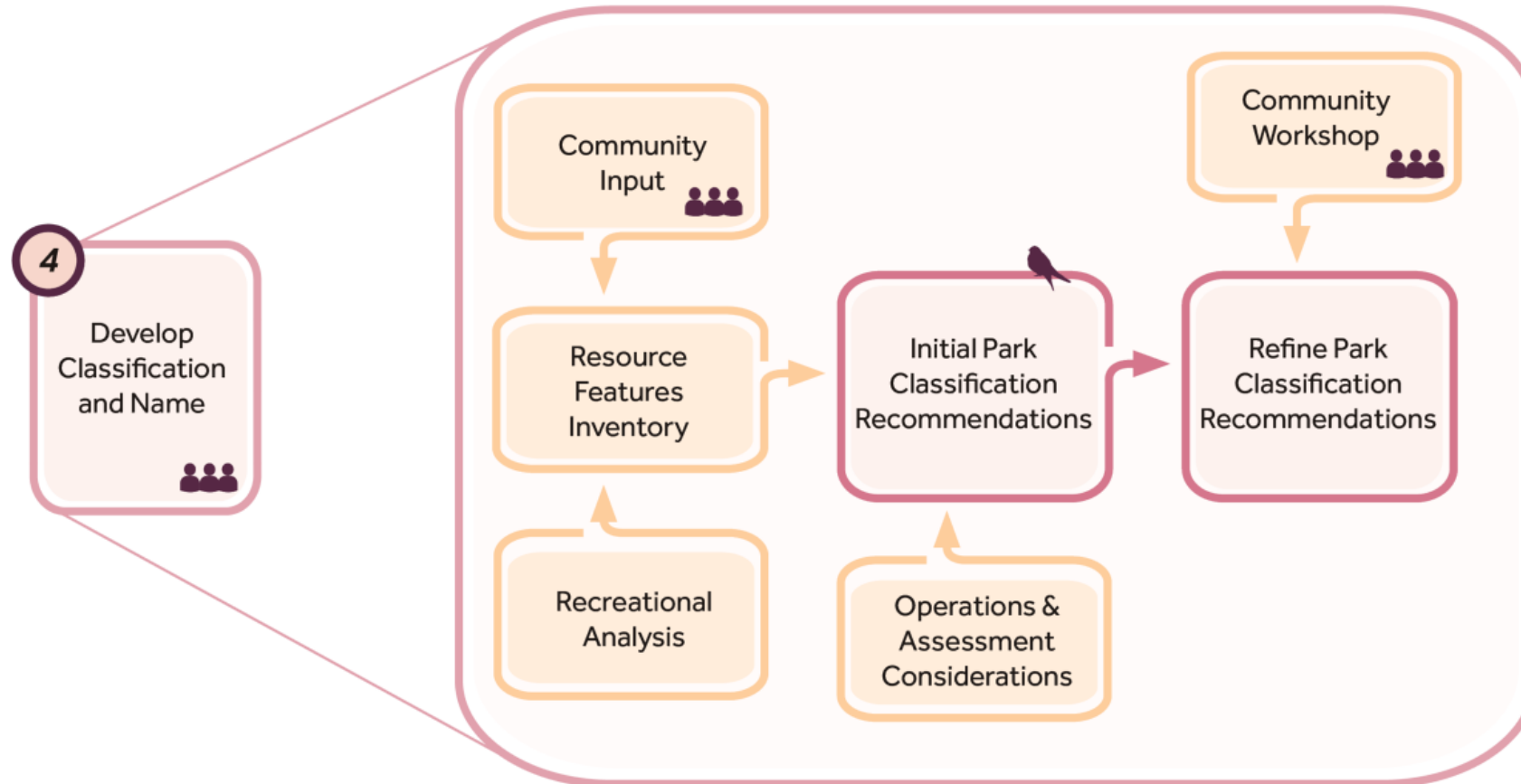


 *Public Engagement Opportunities*





# Classification & Naming



## UNDERSTANDING CLASSIFICATION: ACTIVITIES

The classification of a state park contributes to the determination of the type and intensity of activities allowed in the park. This graphic illustrates the range of potential activities at Alameda-Tesla under each of the four potential classification categories.

### TYPES AND RANGE OF ACTIVITIES/DEVELOPMENT



#### TRAIL SYSTEM

Ex: Paved and unpaved trails

**Low-Intensity:** Fewer, narrower, or shorter trails, limited to hiking only. May have time restrictions. Smaller staging or parking areas.

**High-Intensity:** More, wider, and longer trails that allow biking and equestrian usage. Fewer time restrictions. More and larger staging and parking areas.



#### INTERPRETIVE ACTIVITIES

Ex: Guided tours, programs, exhibits, and visitor centers

**Low-Intensity:** Limited guided tours, fewer exhibits and programs. Smaller visitor center, if any, with limited development footprint.

**High-Intensity:** Multiple and frequent tours, more exhibit and programs. Larger facilities and more extensive development footprint.



#### RECREATION

Ex: Wildlife viewing, picnicking, swimming, boating, rock climbing, and other recreational activities

**Low-Intensity:** Fewer and smaller areas for activities and support amenities. May have restrictions on hours, duration, and seasons. Smaller staging and parking areas.

**High-Intensity:** More and larger areas for activities and support amenities. Fewer restrictions on hours, duration and seasons. More and larger staging and parking areas.



#### OVERNIGHT LODGING

Ex: Camping, RVs, trailers, and hotels

**Low-Intensity:** Fewer and smaller overnight options with minimal facilities. May have restrictions on hours, duration, and seasons.

**High-Intensity:** More and larger overnight options, with more facilities and amenities. Fewer restrictions on hours, duration and seasons.

Low

Typical Intensity of Activities

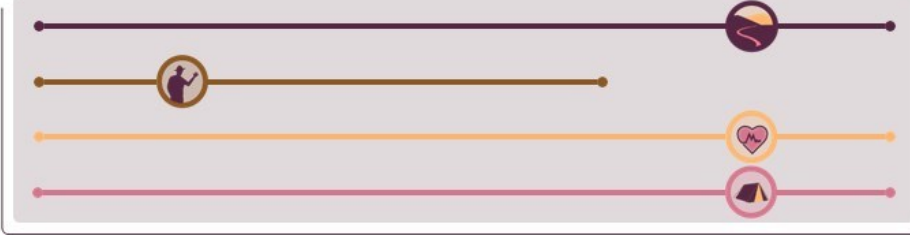
High



Icon = Typical Intensity of Activities/ Development

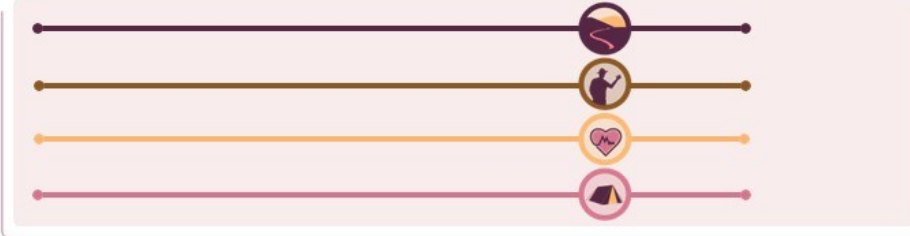
### STATE RECREATION AREAS

**Purpose:** Provide outdoor recreational opportunities.



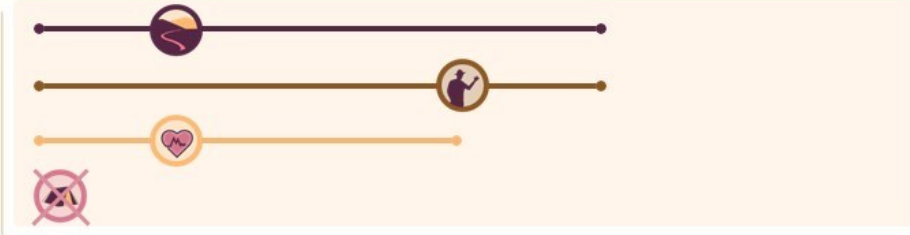
### STATE PARKS

**Purpose:** Preserve areas of outstanding natural, scenic, ecological, and cultural value; allow for public enjoyment and education.



### STATE RESERVES

**Purpose:** Preserve native ecological associations, unique biotic characteristics, geological features, scenic qualities, and/or cultural resources; allow for public enjoyment and education.

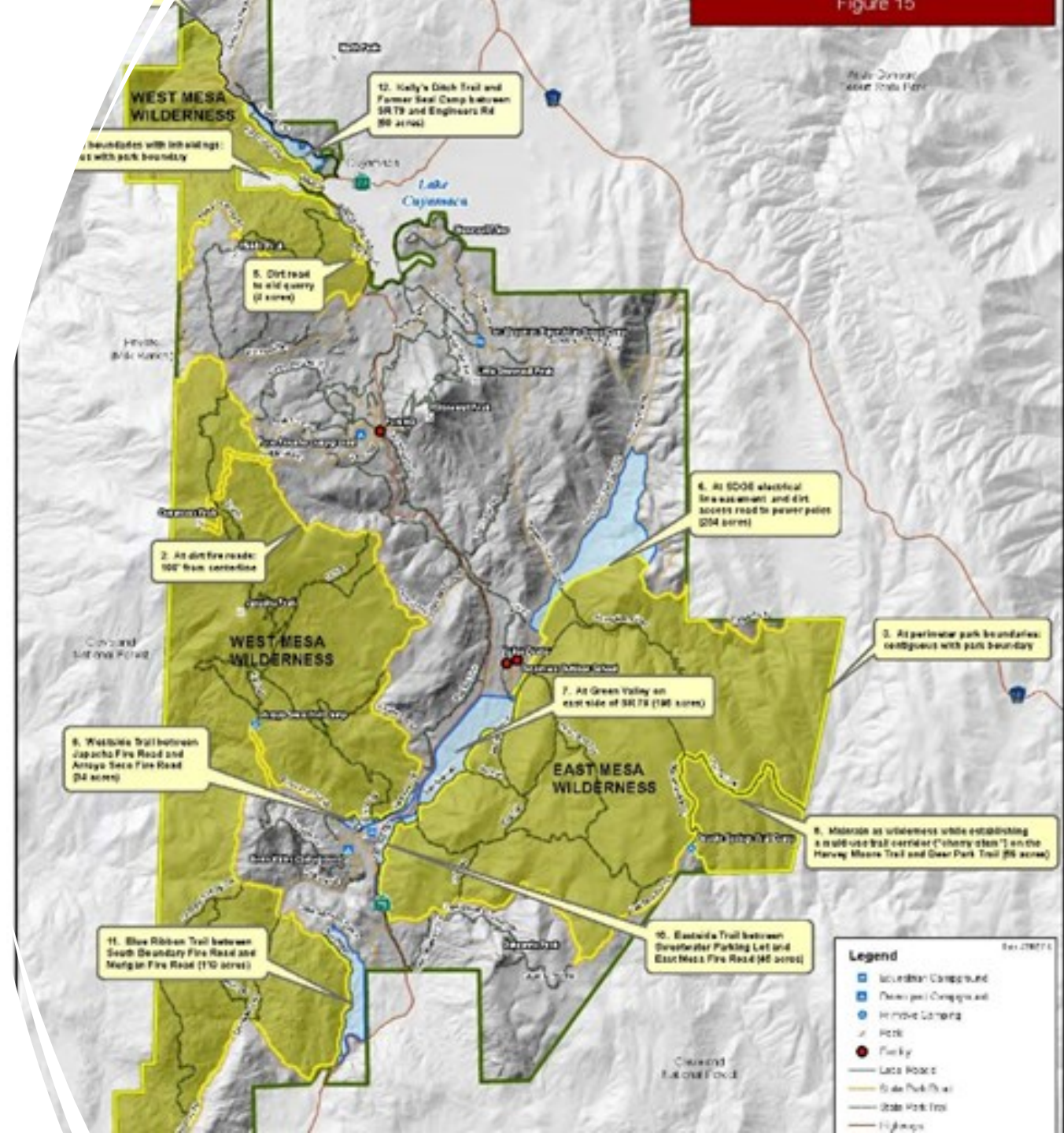


### STATE HISTORICAL UNITS

**Purpose:** Preserve objects of historical, archaeological, and scientific interest.

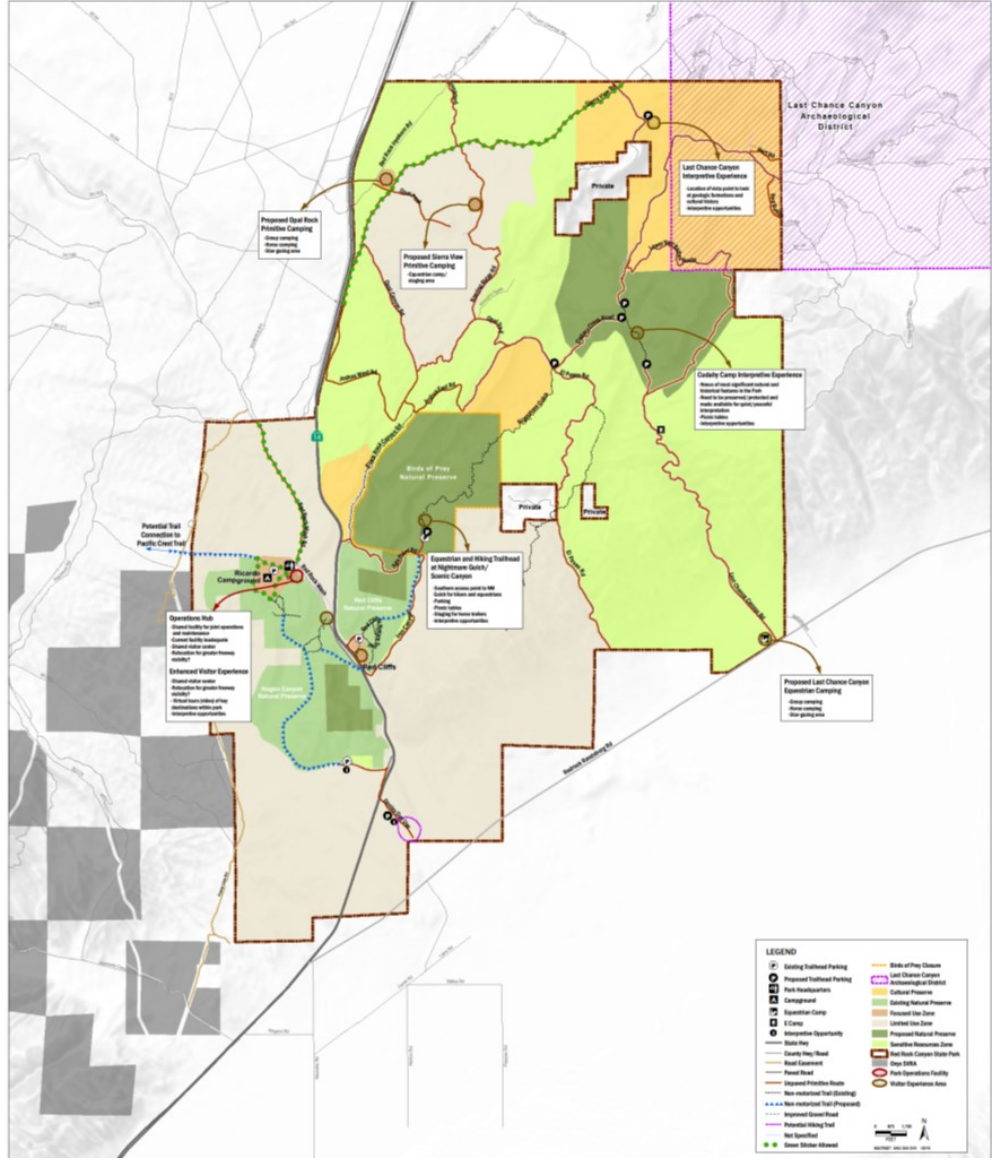


# Classification Examples





### Draft Revised Concept (Classified as State Park)



# Carmel Area State Parks General Plan

## Preferred Alternative Point Lobos SNR

### Legend

#### Existing

- Planning Area Boundary
- Highway
- Paved Road
- Trail
- Creek

#### Management Zones

- Coastal Bluff
- Marine
- Upland Reserve Zone
- Upland Reserve Zone - Entrance Area

### Park Facilities and Activities

- Day Use
- Diver Equipment Drop-off
- Diving Access
- Entry Station
- Historic Resource
- Interpretive Element
- Motorized Boating
- Motorized Boat Launch
- Non-Motorized Boating
- Non-Motorized Boat Launch
- Operations and Maintenance
- Reduced Parking
- Research
- Restrooms
- Special Events
- Staff Residence
- Trails
- Tram Staging
- Vehicle Access
- Visitor Drop-off
- Visitor Information
- Existing Use
- Proposed or Changed Use

### Point Lobos State Marine Reserve

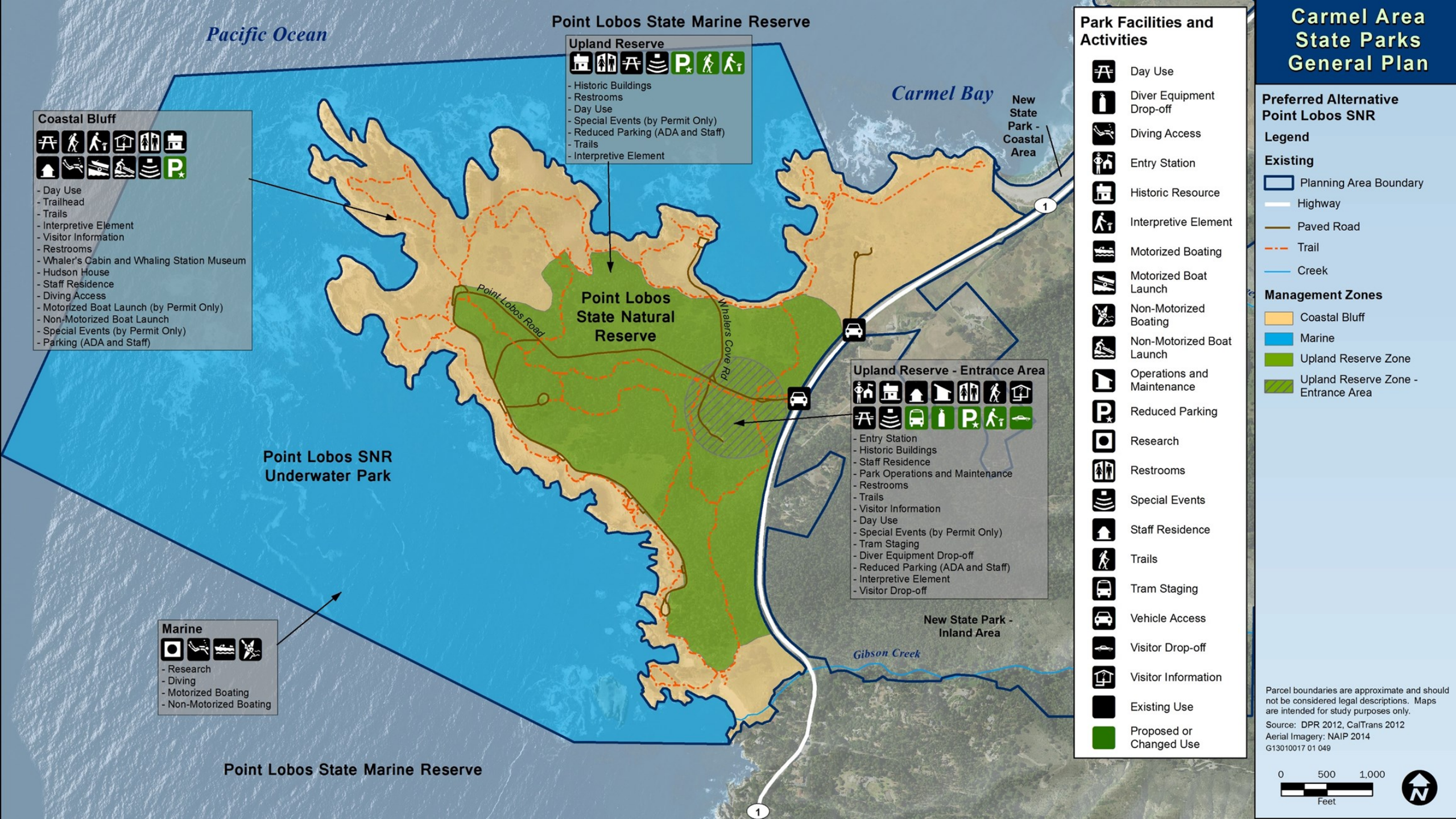
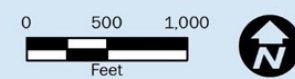
- #### Upland Reserve
- Historic Buildings
  - Restrooms
  - Day Use
  - Special Events (by Permit Only)
  - Reduced Parking (ADA and Staff)
  - Trails
  - Interpretive Element

- #### Coastal Bluff
- Day Use
  - Trailhead
  - Trails
  - Interpretive Element
  - Visitor Information
  - Restrooms
  - Whaler's Cabin and Whaling Station Museum
  - Hudson House
  - Staff Residence
  - Diving Access
  - Motorized Boat Launch (by Permit Only)
  - Non-Motorized Boat Launch
  - Special Events (by Permit Only)
  - Parking (ADA and Staff)

- #### Upland Reserve - Entrance Area
- Entry Station
  - Historic Buildings
  - Staff Residence
  - Park Operations and Maintenance
  - Restrooms
  - Trails
  - Visitor Information
  - Day Use
  - Special Events (by Permit Only)
  - Tram Staging
  - Diver Equipment Drop-off
  - Reduced Parking (ADA and Staff)
  - Interpretive Element
  - Visitor Drop-off

- #### Marine
- Research
  - Diving
  - Motorized Boating
  - Non-Motorized Boating

Parcel boundaries are approximate and should not be considered legal descriptions. Maps are intended for study purposes only.  
 Source: DPR 2012, CalTrans 2012  
 Aerial Imagery: NAIP 2014  
 G13010017 01 049



# Carmel Area State Parks General Plan

## Park Plan for Carmel River State Beach

### Legend

#### Existing

- Planning Area Boundary
- Highway
- Paved Road
- Service Road/Unpaved Trail
- Trail
- Creek/River
- City Limits

#### Management Zones

- Carmel River Lagoon and Wetland Natural Preserve Zone
- Ohlone Coastal Cultural Preserve Zone
- Caltrans Mitigation Bank Zone
- Coastal Margin Zone
- Lagoon/Wetland Zone
- Odello Farm Zone

Parcel boundaries are approximate and should not be considered legal descriptions.  
 Source: Data provided by CSP in 2013 and 2018.  
 NAIP 2014 Aerial Imagery  
 G13010017 01 103



**Carmel River Lagoon and Wetland Natural Preserve Zone**

**Proposed New or Changed Use**

- Trails
- Interpretive Element
- Ecological Restoration

**Caltrans Mitigation Bank Zone**

**Proposed New or Changed Use**

- Ecological Restoration
- Trails
- Interpretive Element

**Coastal Margin (Scenic Road) Zone**

**Proposed New or Changed Use**

- Interpretive Element

**Existing Use**

- Parking (up to 25 Vehicles)
- Day Use
- Restrooms
- Special Events (by Permit Only)

**Ohlone Coastal Cultural Preserve Zone**

**Existing Use**

- Trails
- Special Events (by Permit Only)
- Interpretive Element

**Lagoon/Wetland Zone**

**Proposed New or Changed Use**

- Ecological Restoration
- Day Use
- Special Events (by Permit Only)
- Trails
- Guided Tours
- Interpretive Element
- Restrooms

**Odello Farm Zone**

**Proposed New or Changed Use**

- Group Gathering
- Trailhead
- Trails
- Day Use
- Interpretive Element
- Parking (up to 25 Vehicles) or Potential Shuttle Stop
- Special Events (by Permit Only)
- Visitor Information
- Staff Residence
- Native Plant Shadehouse and Greenhouse

**Existing Use**

- Historic Farm

**Coastal Margin (Monastery Beach) Zone**

**Proposed New or Changed Use**

- Interpretive Element

**Existing Use**

- Day Use
- Restrooms
- Special Events (by Permit Only)

**Coastal Margin (Bay School) Zone**

**Proposed New or Changed Use**

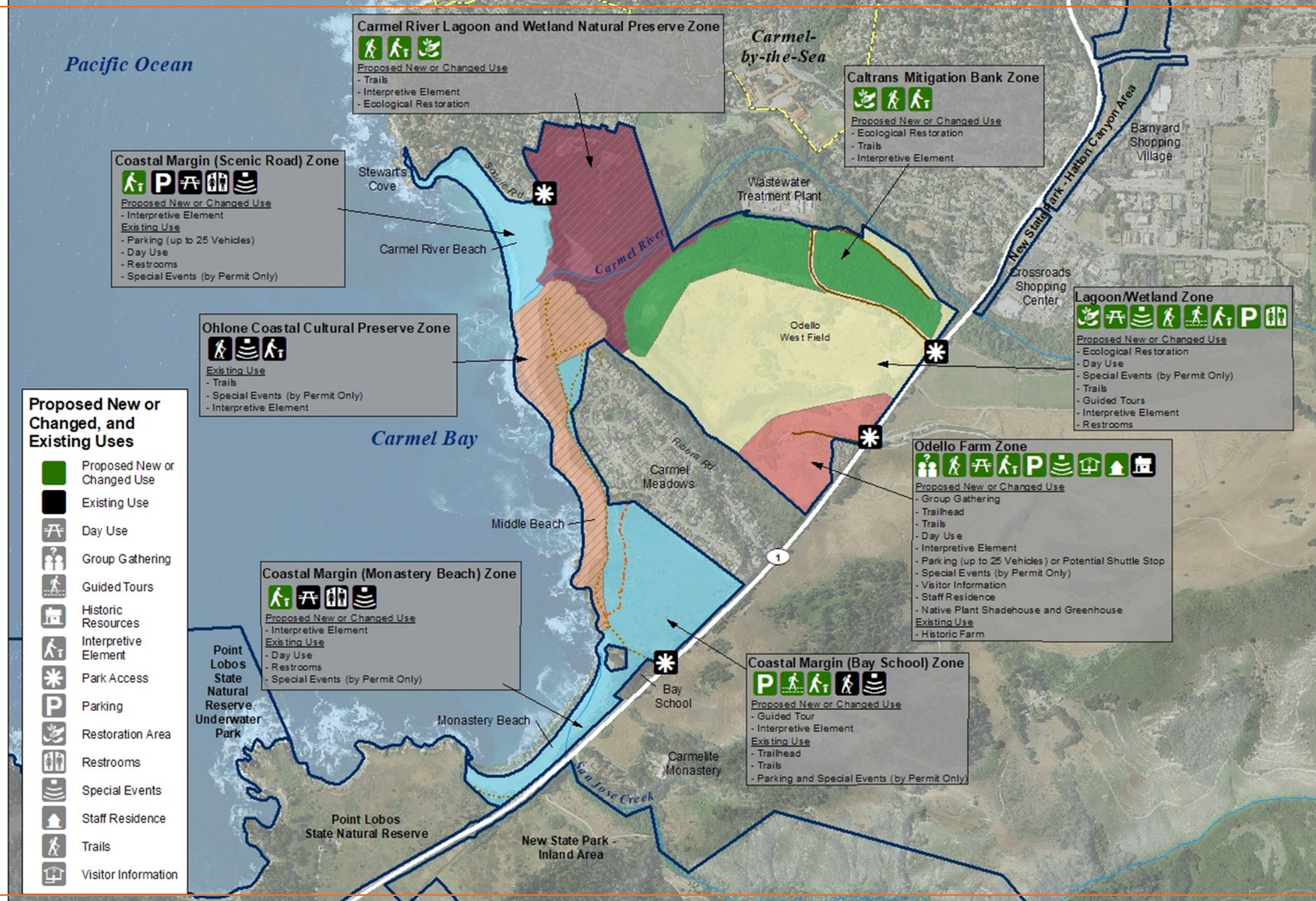
- Guided Tour
- Interpretive Element

**Existing Use**

- Trailhead
- Trails
- Parking and Special Events (by Permit Only)

### Proposed New or Changed, and Existing Uses

- Proposed New or Changed Use
- Existing Use
- Day Use
- Group Gathering
- Guided Tours
- Historic Resources
- Interpretive Element
- Park Access
- Parking
- Restoration Area
- Restrooms
- Special Events
- Staff Residence
- Trails
- Visitor Information



# Carmel Area State Parks General Plan



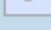
## Preferred Alternative New State Park - Inland Area

### Legend

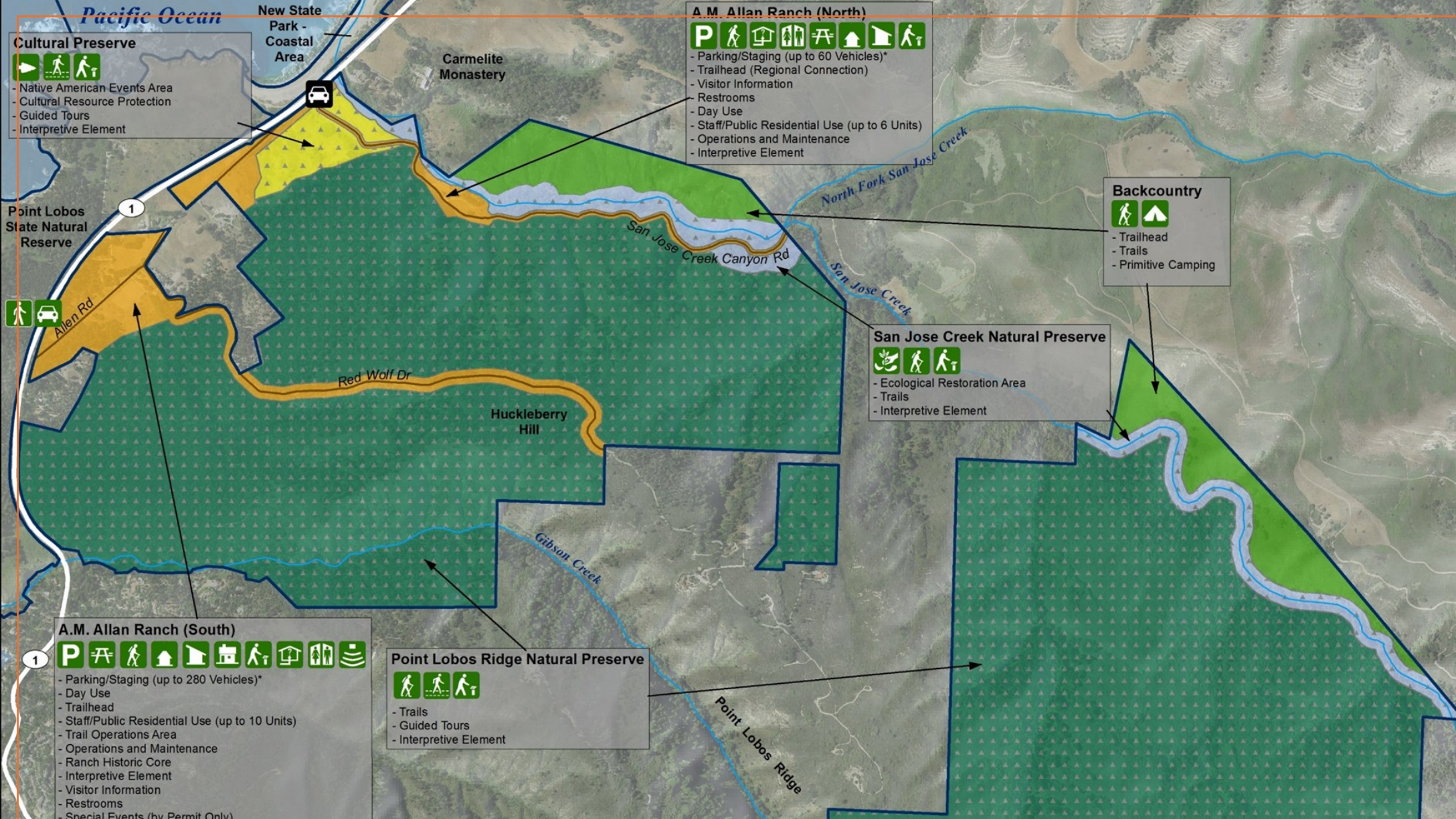
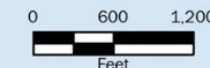
#### Existing

-  Planning Area Boundary
-  Highway
-  Paved Roads
-  Creek




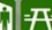




#### Management Zones

-  Cultural Preserve
-  Point Lobos Ridge Natural Preserve
-  San Jose Creek Natural Preserve
-  A.M. Allan Ranch Zone
-  Backcountry

Parcel boundaries are approximate and should not be considered legal descriptions. Maps are intended for study purposes only.  
 Source: DPR 2012, CalTrans 2012  
 Aerial Imagery: NAIP 2014  
 G13010017 01 048





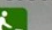
**A.M. Allan Ranch (North)**

-  - Parking/Staging (up to 60 Vehicles)\*
-  - Trailhead (Regional Connection)
-  - Visitor Information
-  - Restrooms
-  - Day Use
-  - Staff/Public Residential Use (up to 6 Units)
-  - Operations and Maintenance
-  - Interpretive Element


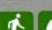
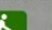
**Backcountry**

-  - Trailhead
-  - Trails
-  - Primitive Camping

**San Jose Creek Natural Preserve**

-  - Ecological Restoration Area
-  - Trails
-  - Interpretive Element










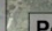
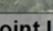
**Point Lobos Ridge Natural Preserve**

-  - Trails
-  - Guided Tours
-  - Interpretive Element




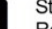





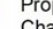




**Cultural Preserve**

-  - Native American Events Area
-  - Cultural Resource Protection
-  - Guided Tours
-  - Interpretive Element

**A.M. Allan Ranch (South)**

-  - Parking/Staging (up to 280 Vehicles)\*
-  - Day Use
-  - Trailhead
-  - Staff/Public Residential Use (up to 10 Units)
-  - Trail Operations Area
-  - Operations and Maintenance
-  - Ranch Historic Core
-  - Interpretive Element
-  - Visitor Information
-  - Restrooms
-  - Special Events (by Permit Only)

### Park Facilities and Activities

 Cultural Resources	 Interpretive Element	 Restoration Area	 Staff/Public Residential Use	 Existing Use
 Day Use	 Operations and Maintenance	 Restrooms	 Trails	 Proposed or Changed Use
 Guided Tours	 Parking*	 Safe Pedestrian Crossing*	 Vehicle Access	



# Required Documents

## Inventory of Features (Resource Summary)

- This document summarizes the significant resource values, unit purpose, and potential opportunities for public access and use.
- This evaluation of known resources guides the consideration for potential classifications and leads to the Department's recommendation.
- The average size of this resource summary is 15 – 20 pages, up to 35 pages, depending on how much information is available and the size and complexity of the park property.

## Maps

- State park boundary, sites, and features
- Regional context – nearby public lands
- Resource sensitivities and constraints (if available)

## Staff report

- Identifies the Department's recommend classification and name
- Identifies naming & classification alternatives that were considered, and justification on the selection made
- Identifies public support and/or controversy that the Director and Commission should be made aware of.





# Thank You

---

Alexandra Stehl

Deputy Director Strategic Planning &  
Recreation Services Division,

California State Parks